



24 PAX CREW TRANSFER VESSEL DAMEN FCS 2710

MV SeaZip 9 is a highly flexible offshore service vessel designed to perform a wide range of offshore wind farm servicing tasks, like transport of Industrial Personnel & equipment.

GENERAL

Year of construction	2020
Hull Material	Aluminium
Superstructure material	Aluminium
Basic functions	Crew and cargo duties
Classification	Bureau Veritas
Flag	Dutch
IMO Number	9887865
Call sign	PGYL

DIMENSIONS

Length overall:	26.8 m
Beam overall	10.5 m
Depth at sides	4.3 m
Draught max	2.3 m
Cargo deck area	90.0 m ²
Gross tonnage	242
PAX capacity	Up to 24 PAX

TANK CAPACITIES

Fuel oil	30.5 m ³
Fresh water	3.5 m ³
Sewage	0.5 m ³
Bilge water / dirty oil	0.4 m ³

PERFORMANCES

Design speed	21 knots
Range at max. speed	1200 nm

PROPULSION SYSTEM

Main engines	2x Caterpillar C32 TTA
Total power	Up to 2,162 bkW
Gearboxes	2x Reintjes ZWVSA series (two-speed)
Propulsion	2x Fixed pitch propeller
Bow thrusters	2x 64 kW, hydraulically driven

ELECTRICAL EQUIPMENT

Network	24V DC, 400/230V 50Hz AC
Generator sets	2x 38.0 kW

DECK LAY-OUT

Anchor equipment	1x 150 kg SHHP Pool TW, Chain, electric winch
Fendering	
Option 1:	Seasight fender 3 piece type Cubs +0 +10 +20 CM
Option 2:	Seasight fender 1 piece with 20 cm nipple 1.5t/m
Maximum Deckload	
Moonpool	
Hoisting equipment	Foldable deck crane, up to 20 tm
Rescue zone	
Rescue cradle	
Fuel cargo system	



SHIP SYSTEMS

Ship systems are according to Class

Fuel transfer system	2x pump, electrically driven
Engine room ventilation	2x Extraction fan, 8,000 m³/hr each (one fan in each engine room)
Air-conditioning	Up to 110,000 BTU/hr
Fire extinguishing	Novec 1230 in engine rooms

ACCOMMODATION

Bridge deck	Wheelhouse, crew mess
Main deck	Personnel area (VIP seats), crew cabins, wet gear room, pantry, mess room, sanitary spaces
Lower deck	Storage
Accommodation	Up to 8 berths
Cabins	2* Single cabins 3* Double cabins

NAUTICAL AND COMMUNICATION EQUIPMENT

Integrates navigation system	
Searchlight	Norselight SL 40 R5 SH
Radar (X-band)	JRC JMR 5410
AIS	JRC JMR 5410
Compass (Magnetic)	John Lilley and Gillie SR4 Class A
Compass (GPS)	JRC JLR-21 31
Autopilot	JRC AlphaPilot
Echo Sounder	JRC JFE-380
Internal communications	Interm Pa-6312
Weather system	Airmar 150WX
Broadband Satellite System	Starlink Flat High Performance Antenna
Wi-Fi	
LAN system	
Navtex	JRC NCR-333
VHF	Cobham Sailor 6248
MF/HF	Cobham Sailor 6222 VHF and MF-HF

ADDITIONAL VESSEL MONITORING SYSTEM

Motion movement
CCTV Cloud
Technical data

SUSTAINABLE OPTION

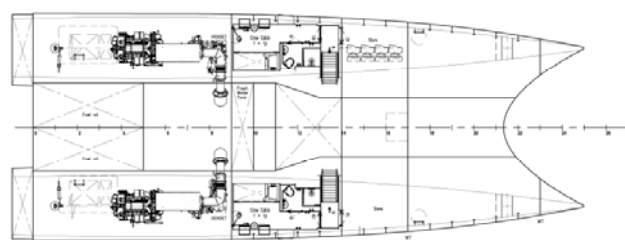
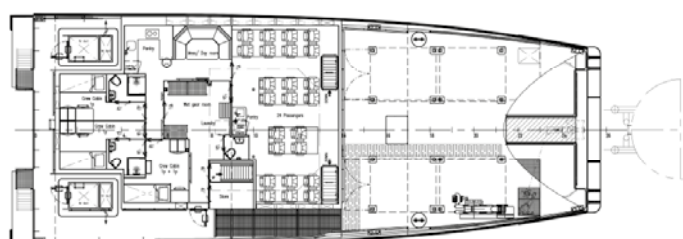
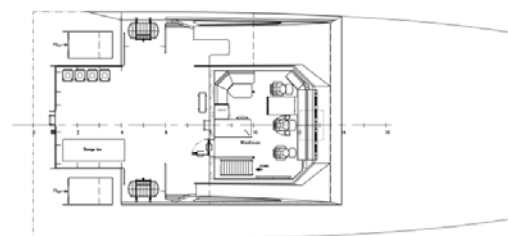
Fuel	HVO 100
------	---------

Some of the items in this specification are optional.
Specification and general arrangement can be changed without
notice. All details are verified but without guarantee.



Korte Lijnbaan 25 - P.O. Box 3 - 8860 AA Harlingen
The Netherlands - +31 (0)517 - 431 225 - chartering@seazip.com

SEAZIP
OFFSHORE SERVICE



FUEL CONSUMPTION 2 X CATERPILLAR C32 TTA 1790 KW

Working schedule	Speed in kts	Consumption ltr/hour/12 pax
12 pax vessel		
Maximum speed	25	580
Economic speed	12	150
Thrusting	0	113
Turbine transit	0	450 (80% load)
Standby/Idling	0	36
At anchor	0	5.2
Reduced speed 85%	20	490

ABOUT THE SHIP MANAGER

The management of SeaZip vessels is carried out by the JR Shipping Group in Harlingen, The Netherlands, an experienced and all-round shipping company. The shipping group operates a fleet of modern container feeders sailing under Dutch flag and JR Shipping cooperates closely with experienced maritime partners, several shipyards in the Netherlands and abroad, and renowned shipping bankers.

JR Shipping Group is an efficient, flexible organisation, offering swift and effective solutions. We combine clout in ship development with well-secured quality and safety in ship management and an eye for sustainability.
www.jrshipping.com